

Name: .....  
DOB: .....  
AGE: .....

## PLEASE BRING THIS LETTER WITH YOU WHEN YOU ATTEND THE FLU CLINIC

Please tell the doctor or nurse before you have your vaccination, if you answer yes to any of the following questions:

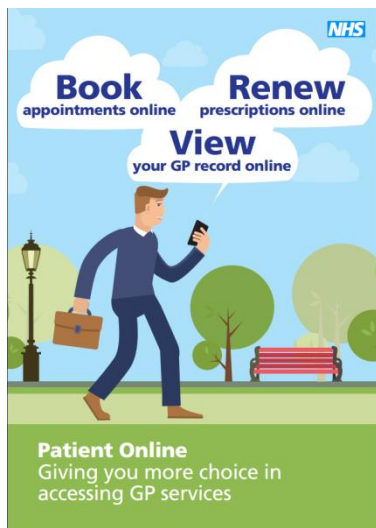
- Have you ever had a reaction to a previous flu vaccination?
- Are you feeling unwell today or do you have a raised temperature?
- Are you allergic to hens' eggs or antibiotics?

### Over 65's

**Patients aged over 65 will receive an updated and better vaccine this year. Patients over 65 are at a high risk of developing serious complications from flu. This vaccine available has been updated from last season's vaccine to better match circulating viruses.**

**Delivery of this vaccine is being staggered during September and throughout October. This is a national programme as there is only one supplier for this vaccine throughout the UK. As a result we are managing our stock levels to ensure that we hold sufficient stocks across all of our Flu clinics. This is why our flu clinics are running into early November this year.**

### Online Access



### Nominate a pharmacy

Save yourself some time and nominate a local pharmacy to collect your prescriptions from... No need to come into the surgery to collect your paper prescriptions any more !



Please state here which pharmacy would like to nominate:

.....